

# IMP HANDBOOK 2021



**MUSIC DIRECTOR:**  
RICHARD BRUS

**MUSIC ADMINISTRATOR:**  
JOANNE GENCA

**CONDUCTORS:**

**BRAD LUCAS** – Concert Band, Wind Ensemble, Wind Orchestra

**CAMERON BARNETT** – Junior Band

**SIMON SWEENEY** – Jazz Ensemble, Intermediate Big Band, Jazz Orchestra

**ALEX MASSO** – Percussion Ensemble

**DANIEL ROSENBAUM** – String Ensemble, Chamber Orchestra

**RICHARD BRUS** – Symphony Orchestra

For all information on the program (including program enrolment, events calendar, forms/permission notes), please visit [sscimp.com](http://sscimp.com).

To contact the program, please email [sscimp@det.nsw.edu.au](mailto:sscimp@det.nsw.edu.au).

The IMP is a co-curricular program funded by participation fees and supported by the college with administrative support by the Music Director and the Music Administrator.

It is advised by a committee of college staff, IMP staff and parent/carer volunteers.

## Contents

1. <u>About The IMP &amp; Meet Our Team</u>	<u>page 3-4</u>
2. <u>Ensembles &amp; Rehearsals</u>	<u>page 5-6</u>
3. <u>Fees &amp; Costs</u>	<u>page 7-8</u>
4. <u>Uniform</u>	<u>page 9</u>
5. <u>Attendance</u>	<u>page 10</u>
6. <u>Tutor Program</u>	<u>page 11</u>
7. <u>Instrument Hire &amp; Storage</u>	<u>page 12</u>
8. <u>IMP Committee, Volunteers &amp; Meetings</u>	<u>page 13</u>
9. <u>Essential Forms To Complete (Photo Disclaimer/Attendance Policy)</u>	<u>page 14</u>

For all information on the program (including program enrolment, events calendar, forms/permission notes), please visit <https://www.sscimp.com/>

To contact the program, please email [sscimp@det.nsw.edu.au](mailto:sscimp@det.nsw.edu.au) or call the following numbers:

- 9560 2355 ext. 132
- 0451 56 31 56 (mobile number for contacting on the day of excursions and external events only)

The IMP Google calendar contains all events, dates and information for the program and can be viewed at <https://www.sscimp.com/>

## 1. About The IMP

Sydney Secondary College (SSC) has an extensive and very successful instrumental music program (IMP) which includes students from across all three campuses of the college (Balmain, Leichhardt and Blackwattle Bay). The IMP is made up of around 250 students (roughly 10% of all students in the college) and so is one of the largest programs in the college and a highlight of cross-campus life for many SSC students.

These students are spread across the eleven ensembles which make up the program. There are four wind bands, three string groups, three jazz groups and a percussion ensemble, with many students participating in multiple ensembles. Each ensemble rehearses once a week before school during term time. All ensembles involve students from multiple campuses, and the college bus returns students to their home campus in time for the school day.

Each ensemble performs multiple times a term, and there are over 60 performances organised by the IMP in any given year. Every ensemble participates in the ONE concert (Term 1), IMP Music Camp (Term 2), Australian School Band and Orchestra Festival (Term 2 or 3), Music In The Park (Term 3) and either our November Nocturnes concert or Jazz At The Bay showcase (Term 4). Each ensemble also performs at assemblies, festivals, fetes and other internal/external events several times a year.

The SSC IMP caters for every level of musician, and our students develop from junior musicians through to performers at an exceptional level. Our ensembles regularly feature in the highest categories in regional competitions and festivals, and regularly place highly in their field. Many of our musicians are involved in The Arts Unit ensembles, regional groups, and highly-regarded events such as Schools Spectacular. The SSC IMP is proudly inclusive while developing students to become excellent musicians, students and human beings.

## Conductors

### **Richard Brus**

#### **Music Director, Conductor (Symphony Orchestra)**

Richard Brus is a Sydney Conservatorium of Music graduate with a Bachelor of Music Performance (Saxophone) and has worked as a conductor, woodwind tutor and music program director in many schools across Sydney. He taught classroom music at James Ruse Agricultural High School and was the school Bands & Ensembles Coordinator from 2014-2019 conducting Concert Band, Jazz Band and Saxophone Ensemble. He currently runs the Newtown North and Darlington Public Schools Combined Bands Program, conducting Concert Band and tutoring woodwind. As a performer, he has played saxophone in various Jazz and Contemporary groups both in Sydney and interstate and currently plays in a number of working Jazz Big Bands.

## Cameron Barnett

### Conductor (Junior Band)

Cameron Barnett has been the Music Administrator of the SSC IMP since 2015, and also works as a woodwind tutor and conductor in the program. Since graduating from the Sydney Conservatorium of Music, Cameron has worked extensively across Sydney as a music tutor, conductor and administrator. Cameron previously managed operations for the Northern Beaches Orchestra, where he was also Principal Clarinet for over five years. As a performer, Cameron has played clarinet, saxophone and flute with many of Sydney's musical theatre societies, and regularly performs in many bands and orchestras.

## Brad Lucas

### Conductor (Concert Band, Wind Ensemble, Wind Orchestra)

Brad Lucas graduated from the Sydney Conservatorium of Music with a Bachelor of Music Performance (Euphonium) in 2014. As a performer he has appeared with the Sydney Symphony Orchestra, and is a founding member of the Sydney Ophicleide Quartet.

He is currently a Euphonium Lecturer at the Sydney Conservatorium of Music, and Low Brass Tutor at The Arts Unit.

Brad is also a committee member of the ABODA NSW, and has conducted the NSW State Junior Wind Band, and The Arts Unit Symphonic Wind Orchestra on their 2017 regional tour.

## Simon Sweeney

### Conductor (Jazz Ensemble, Intermediate Big Band, Jazz Orchestra)

Simon Sweeney is a graduate of the Sydney Conservatorium of Music where he earned both Bachelors and Masters degrees in music performance, and is now a faculty member. As a trumpeter, Simon has performed with many of Australia's finest orchestras, jazz groups and professional music theatre productions. Simon conducts ensembles and teaches trumpet throughout Sydney, and many of Simon's former students are now professional players in the Sydney scene and can be heard in service bands, musical theatre pits, concert halls and recording studios.

## Alex Masso

### Conductor (Percussion Ensemble)

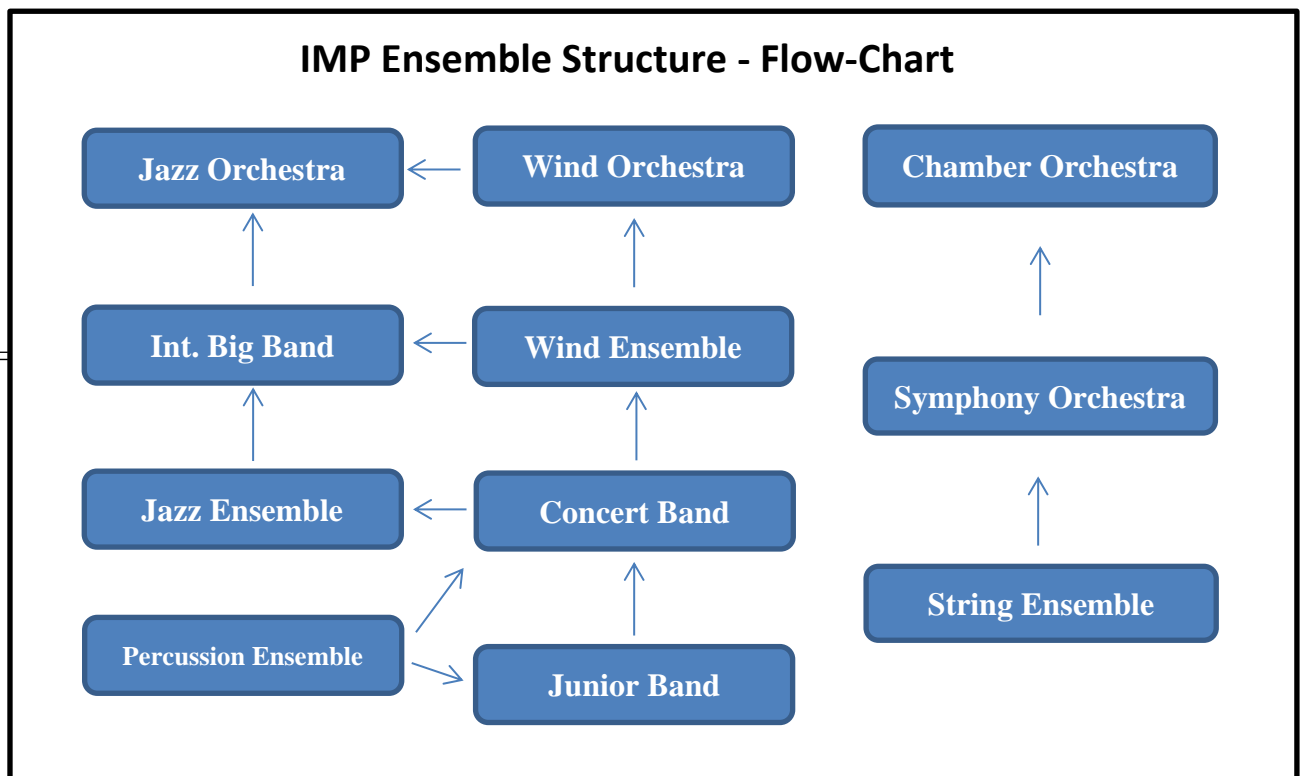
Alex Masso is a highly sought-after jazz drummer, percussionist and educator. Alex graduated from the Sydney Conservatorium of Music and has gone on to teach at the Wollongong Conservatorium, Canterbury Girls College, Ashbury Public School as well as Sydney Secondary College. Alex has also worked as the manager of the Music In Communities Network for the Music Council Of Australia and Freedman Music Fellowships, and as events coordinator at the Wollongong Conservatorium. Alex also plays in the highly regarded groups The Vampires, Slide Albatross, Kinetic Jazz Orchestra, The Splinter Orchestra and others.

## Daniel Rosenbaum

Conductor (String Ensemble, Chamber Orchestra)

Daniel Rosenbaum holds the position of Tutti Violin in the Opera Australia Orchestra, having first joined the Orchestra in 1997. Daniel began his musical studies at the age of seven and under the tutelage of Charmian Gadd and Sylvia Rosenberg went on to complete a Diploma of Music and Graduate Diploma of Music at Sydney Conservatorium of Music and Manhattan School of Music respectively. Over the course of his career Daniel has won the Vasanta Travelling Scholarship and The Queen Elizabeth II Silver Jubilee Trust for Young Australians. Daniel has worked with the Sydney Symphony Orchestra, Australian Chamber Orchestra and attended the inaugural Pacific Music Festival in Japan working with the London Symphony Orchestra conducted by Leonard Bernstein and Michael Tilson Thomas.

## 2. Ensembles and Rehearsals



All ensembles rehearse from 7:10-8:10am, with arrival time of 7:00am, on every week of the school term. All ensembles include members from multiple campuses of the college (Balmain, Leichhardt and Blackwattle Bay campuses). The college bus returns students to their home campus after morning rehearsals.

Students generally start in the junior groups and work their way up to more advanced ensembles as they become more proficient musicians. The jazz groups are optional extension ensembles for IMP members: members of these ensembles must participate in another core ensemble.

All new students to the college are placed in ensembles via an audition/placement process which occurs in roughly Week 3 of Term 1. Full specific details of this process will be provided closer to the time via email.

Existing students may then audition for higher ensembles at the end of each year, or may choose to stay in their current ensemble/s.

**The IMP caters for the following instruments:** flute, oboe, clarinet, bass clarinet, bassoon, alto saxophone, tenor saxophone, baritone saxophone, French horn, trumpet, trombone, euphonium, tuba, violin, viola, cello, double bass, bass guitar, piano (limited vacancies), jazz guitar (limited vacancies) and percussion. Percussionists are expected to play the full range of percussion (including tuned percussion) in ensembles.

**Please see the following page for ensemble descriptions and rehearsal schedules.**

## Wind Program

### Junior Band (JB)

*This group is for junior students (Years 7-8) with some previous ensemble experience (1-4 years) or those wanting to learn a new or additional instrument.*

Rehearsals: Fridays 7.10am – 8.10am Leichhardt Campus Hall

### Concert Band (CB)

*This group is for junior students (Years 7-10) with significant previous ensemble experience (3-4 years).*

Rehearsals: Mondays, 7.10am – 8.10am Balmain Campus Hall

### Wind Ensemble (WE)

*This group is for intermediate students (Years 8-10) with extensive previous ensemble experience.*

Rehearsals: Thursdays, 7.10am – 8.10am Leichhardt Campus Hall

### Wind Orchestra (WO)

*This group is for the most experienced and accomplished musicians in the college (Years 10-12).*

Rehearsals: Wednesdays, 7.10am – 8.10am Blackwattle Bay Campus Hall

## String Program

### String Ensemble (SE)

*This group is for junior students (Years 7-8) with some previous ensemble experience, those wanting to learn a new or additional instrument, or those wanting extra playing experience and to refine technique.*

Rehearsals: Mondays, 7.10am – 8.10am Leichhardt Campus Hall

### Symphony Orchestra (SO)

*This group is for students (Years 7-12) with significant previous ensemble experience, as well as wind, brass and percussion players who audition or who are invited to join. Year 7 students who are invited to join Symphony Orchestra must also be enrolled in and attend String Ensemble.*

Rehearsals: Tuesdays, 7.10am – 8.10am Leichhardt Campus Hall

### Chamber Orchestra (CO)

*This is an extension string group consisting of students who play at an advanced level. Students in Years 7-11 must also be enrolled in Symphony Orchestra to be able to audition for and enrol in this ensemble.*

Rehearsals: Thursdays, 7.10am - 8.10am Blackwattle Bay Hall

## Jazz Program All Jazz Program members must also be members of the Wind/String/Percussion program.

### Jazz Ensemble (JE)

*This group is aimed at students with significant previous jazz experience. Limited places, entry by audition.*

Rehearsals: Wednesdays, 7.10am – 8.10am Leichhardt Campus Drama Space (adjacent to the hall)

### **Intermediate Big Band (IBB)**

*This group is aimed at students with extensive previous jazz experience. Limited places, entry by audition.*

Rehearsals: Tuesdays, 7.10am – 8.10am Blackwattle Bay Campus Hall

### **Jazz Orchestra (JO)**

*This group is aimed at the most experienced and accomplished jazz musicians in the college.*

Rehearsals: Fridays, 7.10am – 8.10am Blackwattle Bay Campus Hall

### **Percussion Ensemble** All Year 7 & 8 percussion students in JB and CB must enrol in Percussion Ensemble.

*This group is aimed at percussionists with band experience and for students wanting to develop their percussion skills and ensemble playing.*

Rehearsals: Wednesdays, 7.10am – 8.10am Leichhardt Campus Hall



## 3. Fees & Costs

Fees can be paid in full at the beginning of the year, or in two instalments as indicated below. See the following page (Page 8) for how to pay.

### **Program Fees: Program fees are billed as follows for 2021:**

Students in **One Ensemble**: \$490 for the year

Payment 1 - \$245 due by Term 1 Week 10

Payment 2 - \$245 due by Term 3 Week 5

Students in **Two Ensembles**: \$650 for the year

Payment 1 - \$325 due by Term 1 Week 10

Payment 2 - \$325 due by Term 3 Week 5

Students in **Three (or more) Ensembles**: \$680 for the year

Payment 1 - \$340 due by Term 1 Week 10

Payment 2 - \$340 due by Term 3 Week 5

Program fees are set at a minimum to cover the general running of the program; this includes the cost of conductors, administration, sheet music, equipment and the running of events throughout the year. **The first payment instalment needs to be paid in full in order for students to continue in the program in the second half of the year.** Ongoing payment plans can be negotiated in consultation with the IMP director and campus principals. Please see 'Financial Arrangements' below for further details.

### **IMP Camp (Mon May 31 – Wed 2 June 2021, Term 2 Week 7): \$340**

The annual IMP Music Camp is a highlight of the college calendar, and attendance is compulsory for all IMP students. IMP Camp allows for a term's worth of rehearsals/playing time across three intensely focused days. IMP Camp features over 12 hours of rehearsals/playing time, and also includes tutorials with professionals, special project ensembles, games, musical activities and a unique environment to develop friendships and musical skills. **The IMP Camp payment is due by Term 2 Week 1.**

### **Other Costs**

- **IMP Uniform:** see page 10
- **IMP Instrument Hire:** see page 13. **Instrument hire payment is due by Term 1 Week 10.**
- **IMP Jazz Intensive and IMP Tour** – these are special events which do not necessarily run every year. Jazz Intensive costs approx. \$25. Tour costs approx. \$300. Full details will be provided as relevant.

### **Financial Arrangements**

Please contact the IMP Administrator at [sscimp@det.nsw.edu.au](mailto:sscimp@det.nsw.edu.au) if you are having difficulty making payment of IMP fees. As mentioned above, ongoing payment plans can be negotiated in consultation with the IMP director and Campus Principal. The IMP is a co-curricular program run by fees paid by parents, and so relies on the prompt payment of fees in order for the program to run as effectively and successfully as possible.

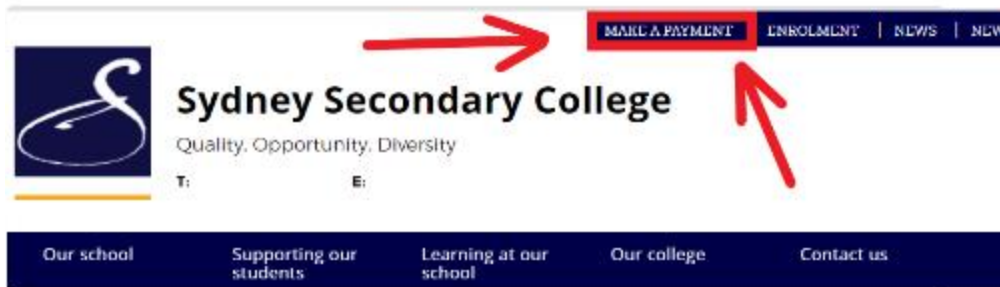
**Please see the following page (page 8) for fee payment methods.**



## [How To Pay IMP Fees](#)

### INSTRUCTIONS FOR PAYING IMP FEES ONLINE

1. Go to your home campus website (Balmain, Leichhardt or Blackwattle Bay, as applicable)
2. Click on the 'Make a payment' tab:



3. Fill in the Payment Details. Under 'Payment Options' select 'Other', then type in one of the **3** Payment Descriptions with corresponding Payment Amounts, as below:

- a. IMP Program Fees **Payment One**
- b. IMP Program Fees **Payment Two**
- c. IMP Camp

4. Click 'Add Payment' to add additional items being paid for.
5. Follow the prompts further to add credit card details, and then to complete the transaction.
6. Please pay in separate transactions for multiple students (i.e. if you have more than one child in the program).
7. You will be emailed a receipt of payment once the transaction is completed.
8. You will be prompted by the IMP Administrator at a later date if there are any outstanding fees.
9. For more information, or if you have any questions, please visit [www.sscimp.com](http://www.sscimp.com) or email the IMP Administrator at [sscimp@det.nsw.edu.au](mailto:sscimp@det.nsw.edu.au)

#### Payment Options

Please select which items you would like to make a payment or donation for:

- Voluntary School Contributions
- Subject Contributions
- Excursions
- Sport
- Creative and Practical Arts
- Sales to Students
- Other

★ Payment Description 1		<input type="text"/>
★ Payment Amount 1	\$	<input type="text"/>
★ Payment Description 2		<input type="text"/>
★ Payment Amount 2	\$	<input type="text"/>
★ Payment Description 3		<input type="text"/>
★ Payment Amount 3	\$	<input type="text"/>

Remove Payment
Add Payment

Total Payment Amount \$

### 4. IMP Uniform

Both formal and casual IMP uniforms are required to participate in the IMP. They must be purchased **before a student's first concert**.

The **formal IMP uniform** consists of:

- IMP logo formal shirt – provided by **Pickles Uniform shop - \$31**
- IMP tie (boys AND girls) – provided by **Pickles Uniform shop - \$25**
- Long black dress pants (no jeans or sweat pants) – provided by student
- Long black socks (no ankle socks) – provided by student
- Black dress shoes (no joggers) – provided by student

The **casual IMP uniform** consists of:

- IMP logo polo shirt - provided by **Pickles Uniform shop - \$27.50**
- Casual black pants (no tights or sweat pants) – provided by student
- Long black socks – provided by student
- Plain black shoes – provided by student

Please note:

- No leggings
- No track pants or hoodies
- No white socks

The IMP uniform is sold through the **Pickles Uniform shop** at **Leichhardt** and **Balmain Campus**. **Please contact your home campus front office to confirm Pickles Uniform shop opening times for 2021.**

IMP uniform items can also be bought online at [www.youruniformshop.com.au](http://www.youruniformshop.com.au)

Under 'Find Your School' click on SSC Leichhardt Campus or SSC Balmain Campus, then click on 'Shop Now'

**Please note: prices are current as of 03/12/20**

## 5. Attendance

As valued members of the IMP, it is expected that all students participate fully in their ensembles for the entire duration of the school year. Each ensemble works as a team for the whole year and requires on-going and regular commitment by every student. This is integral to each student's development as a musician in the IMP, and to the successful functioning of the ensemble. Members joining the IMP do so with a minimum one year commitment.

All students experience times in the school year when they are busy and need to work hard. It is their responsibility to be organised and manage their time so that they can do well in school, have a social life, make time for their own personal practise and attend all IMP rehearsals and events.

The college supports IMP commitments that occur in school time, and teachers and staff understand that students may miss classes at times. It is the responsibility of the student to catch up on work missed in class.

### Absence from Rehearsals & Performances

Notice is required to explain **any** absence from a rehearsal or performance. Music-making in an ensemble is about team-work and commitment: unexplained absences make rehearsals difficult and affect the quality of performances. Sydney Secondary College IMP employs a **three strike policy** regarding absences:

#### **First Strike (first unexplained absence in a term):**

Parent/carer will be notified by email.

#### **Second Strike (second unexplained absence in a term):**

Parent/carer and college principal will be notified by email. Warning will be given that if the student is absent again her/his position in the ensemble may be awarded to another player.

#### **Third Strike (third unexplained absence in a term):**

The IMP Music Director and conductors will consider demoting the student to a lower position in their ensemble or, in habitual cases, demoting the student to a lower ensemble. Parent/carer will be notified of the decision by email.

*Example: After three unexplained absences in Term 2, a Wind Orchestra Trombone 2 player will be demoted to Trombone 3 and the Trombone 2 position will be awarded to another player.*

Please note: an explained absence in the case of sudden (serious) illness or (serious) misadventure is acceptable. Additionally, the IMP is aware of most college events that may result in absences. **However, no matter what the reason, the IMP must be informed of any explained absence via email at [sscimp@det.nsw.edu.au](mailto:sscimp@det.nsw.edu.au). This is the responsibility of the student and their parent/carer.**

## Withdrawal

Withdrawing from an IMP ensemble (or the IMP altogether) should only be considered at the end of the year. Withdrawal must be made in writing, and parents/carers must inform the IMP well in advance by contacting [sscimp@det.nsw.edu.au](mailto:sscimp@det.nsw.edu.au).

Please note: If no formal withdrawal has been received by the IMP, fees will still apply even if the student stops attending.

### 6. Tutor Program

All members of the IMP must have regular, on-going private lessons on their instrument. This is essential for the development of the student's technical skills on their instrument. Many students already have a tutor, but for those looking for a new one experienced in high-school-level tuition it is recommended that you use the IMP-approved in-school tutors as part of our instrumental tutor program.

On-site tutors liaise and communicate each student's progress directly to the IMP Music Director regularly. Additionally, our tutors assist in tuition at band intensives, IMP music camp and at other events throughout the year. All IMP-approved tutors are excellent, qualified working musicians and teachers, and are subject to Sydney Secondary College's mandatory child protection policies.

Lesson days, times and fees are to be arranged between parents/carers and tutors. Tutors will advise parents/carers of days, times, fees and tutoring room locations for lessons. It is the parent/carer's responsibility to inform tutors directly, and with adequate notice, of any reason for their child missing their lesson.

The following instrumental tutors are available at Sydney Secondary College. Please contact them directly to arrange lessons. Please note: lesson days, times and campuses/locations are entirely subject to the tutor's availability. If you are unable to schedule a lesson with one of our listed tutors, or to arrange lessons on instruments not listed below (e.g. bassoon, French horn or tuba) please contact [sscimp@det.nsw.edu.au](mailto:sscimp@det.nsw.edu.au) and we can put you in touch with other local SSC-IMP-approved tutors.

<b>Instrument</b>	<b>Tutor</b>	<b>Contact Details</b>
<b>Flute</b>	Elia Bosshard	studio@eliabosshard.com 0404 369 634
<b>Oboe</b>	Joshua Ning	<a href="mailto:joshuaning@hotmail.com">joshuaning@hotmail.com</a> 0431 519 101
<b>Clarinet &amp; Saxophone</b>	Cameron Barnett	<a href="mailto:cameron.barnett@hotmail.com">cameron.barnett@hotmail.com</a> 0431 861 253
<b>Trumpet</b>	Louise Horwood	<a href="mailto:louisehorwoodtrumpet@gmail.com">louisehorwoodtrumpet@gmail.com</a> 0404 061 732
<b>Trumpet</b>	Charles Casson	<a href="mailto:charles.casson1@gmail.com">charles.casson1@gmail.com</a> 0432 428 635
<b>Trombone &amp; Euphonium</b>	Anthony Kable	<a href="mailto:anthony@kable.com.au">anthony@kable.com.au</a> 0414 964 123
<b>Violin &amp; Viola</b>	Kasia Hans	<a href="mailto:dannykasia@optusnet.com.au">dannykasia@optusnet.com.au</a> 0412 544 013
<b>Violin &amp; Viola</b>	Daniel Rosenbaum	<a href="mailto:daniel.Rosenbaum4@det.nsw.edu.au">daniel.Rosenbaum4@det.nsw.edu.au</a> 0410 524 013
<b>Cello</b>	TBC for 2021	TBC for 2021
<b>Double Bass &amp; Bass Guitar</b>	Abel Cross	<a href="mailto:abelcrossbass@gmail.com">abelcrossbass@gmail.com</a> 0410 242 479
<b>Percussion</b>	Alex Masso	<a href="mailto:alexmasso@gmail.com">alexmasso@gmail.com</a> 0406 361 439

## 7. Instrument Hire & Storage

### Instrument Hire

All students are encouraged to own their own instruments. The IMP has some instruments available for hire, including larger/more unusual instruments e.g. euphonium, tuba, bassoon, bass clarinet, baritone saxophone. Instruments are available for hire at \$300 per year. Students need to return a completed instrument hire form before they can pick up their instrument. Email [sscimp@det.nsw.edu.au](mailto:sscimp@det.nsw.edu.au) to request an instrument hire form and invoice.

Students can also hire instruments from:

The Arts Unit - [www.artsunit.nsw.edu.au/instrument-hire](http://www.artsunit.nsw.edu.au/instrument-hire)

Sax and Woodwind - <http://www.saxandwoodwind.com.au/>

Sydney String Centre - <https://www.violins.com.au/>

Other local music shops also have hire-purchase arrangements that allow you to put the money you spend on hire towards a purchase at a later date.

### Instrument Servicing and Maintenance

Contact the IMP Music Administrator about periodic maintenance of IMP-owned hire instruments.

### Instrument Insurance

All students are required to have insurance for hired and owned instruments. This should cover the instrument at home, in transit and at school. Students hiring instruments from the IMP are responsible for the costs of any damage incurred on the instrument and replacement or repairs to the instrument.

### Instrument Storage

Balmain, Leichhardt and Blackwattle Bay campuses all have secure storage facilities where students can leave their instruments before and after rehearsals. Students must remember to collect their instrument promptly at the end of the day. In the interest of practise and to avoid risk of damage, students should only leave their instruments at school on the day of their rehearsal and performances.





### 8. IMP Parent Group, Volunteers and Meetings

The IMP is advised by an advisory committee made up of IMP staff, college and music staff, and by parents/carers of students in the program. Additionally, many of the events and aspects of the program which make it so wonderful simply couldn't happen without the support of parents/carers who volunteer their time in a variety of ways.

All parents/carers are invited to be part of the advisory committee by being a general member or parent volunteer. Many roles involve small amounts of work throughout the year, or only require time in the lead up to a specific event. If you would be interested in joining the advisory committee, volunteering in any way, or if you have any further questions, please contact IMP via email at [sscimp@det.nsw.edu.au](mailto:sscimp@det.nsw.edu.au).

#### IMP Advisory Committee Meetings

The IMP advisory committee meets once per term at one of the three college campuses. All IMP parents/carers are welcome to attend any committee meetings. All staff, parents and carers will be advised of meeting dates, time and locations at the start of each term.

#### **There are many benefits to be gained from being an IMP parent volunteer!**

1. A wonderful way to meet other parents, and to be part of a community of music-loving parents and children.
2. You get to see your child perform, often with up-close and exclusive benefits.
3. You will gain a better, more well-rounded understanding of the program and other ensembles.
4. You can do stuff you love to do – audio, decorations, cooking/manning the BBQ, communications and marketing opportunities.
5. Often the commitment is very small – a couple of hours once or twice a year – but the benefits are invaluable.



## Photo Disclaimer

Please sign and return to [sscimp@det.nsw.edu.au](mailto:sscimp@det.nsw.edu.au) by **Tuesday March 23<sup>rd</sup> 2021**

I give permission for my child to be photographed, recorded and/or filmed during IMP events both within Sydney Secondary College campuses and at public events during his/her enrolment in the IMP program. These images, recordings and/or footage may be used solely for the following:

- Educational purposes
- Concert submissions and applications
- Promotion of the IMP

**Student's name:** \_\_\_\_\_ **Campus:** Leichhardt  Balmain  Blackwattle Bay  (*please tick*)

\_\_\_\_\_

Name – parent/carer

Signature – parent/carer

Date: / /

## Attendance Policy

Please sign and return to [sscimp@det.nsw.edu.au](mailto:sscimp@det.nsw.edu.au) by **Tuesday March 23<sup>rd</sup> 2021**

I am willing to enrol my child in the IMP until the end of the school year. I will encourage my child to see through her/his commitment to her/his ensemble by not withdrawing during the year.

- Yes, I agree to commit to the IMP for the whole year. If I choose to withdraw I will do so at the end of the school year and will do so in writing to [sscimp@det.nsw.edu.au](mailto:sscimp@det.nsw.edu.au).

I agree to support the IMP's **Three Strike Attendance Policy** by doing the following:

- Notifying the IMP by email on [sscimp@det.nsw.edu.au](mailto:sscimp@det.nsw.edu.au) within 5 days before a planned absence
- Notifying the IMP by email on [sscimp@det.nsw.edu.au](mailto:sscimp@det.nsw.edu.au) as soon as possible when unforeseen circumstances result in absence
- Communicating with my child about attendance issues if needed before poor attendance becomes a problem

For further information about this policy, please consult the IMP Handbook, page 10. To discuss the policy, please contact the IMP on [sscimp@det.nsw.edu.au](mailto:sscimp@det.nsw.edu.au).

**Campus:** Leichhardt  Balmain  Blackwattle Bay  (*please tick*)

\_\_\_\_\_

Name – parent/carer

\_\_\_\_\_

Signature – parent/carer

Date: / /

\_\_\_\_\_

Name - student

\_\_\_\_\_

Signature – student

Date: / /